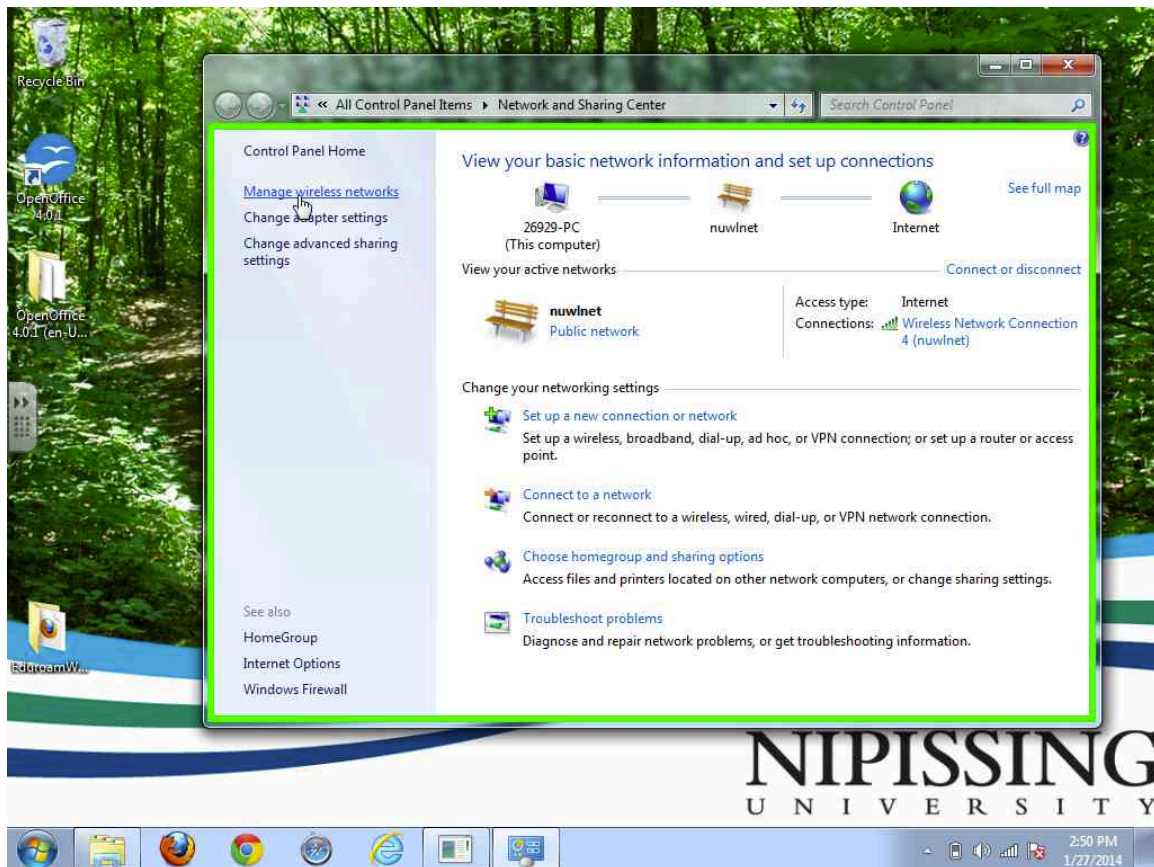


eduroam Setup for Windows 7

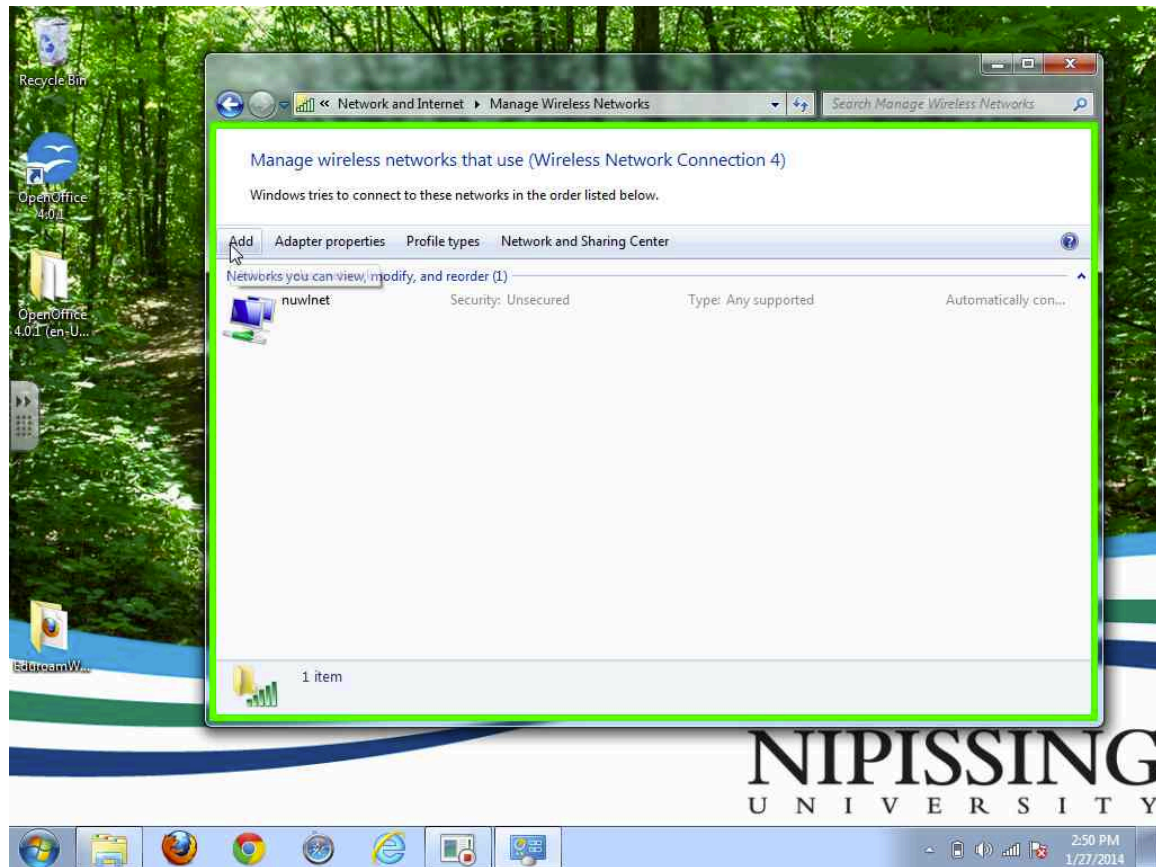
Step 1: Open Network and Sharing Center

Go to Start → Search → Type "Network and Sharing Center".

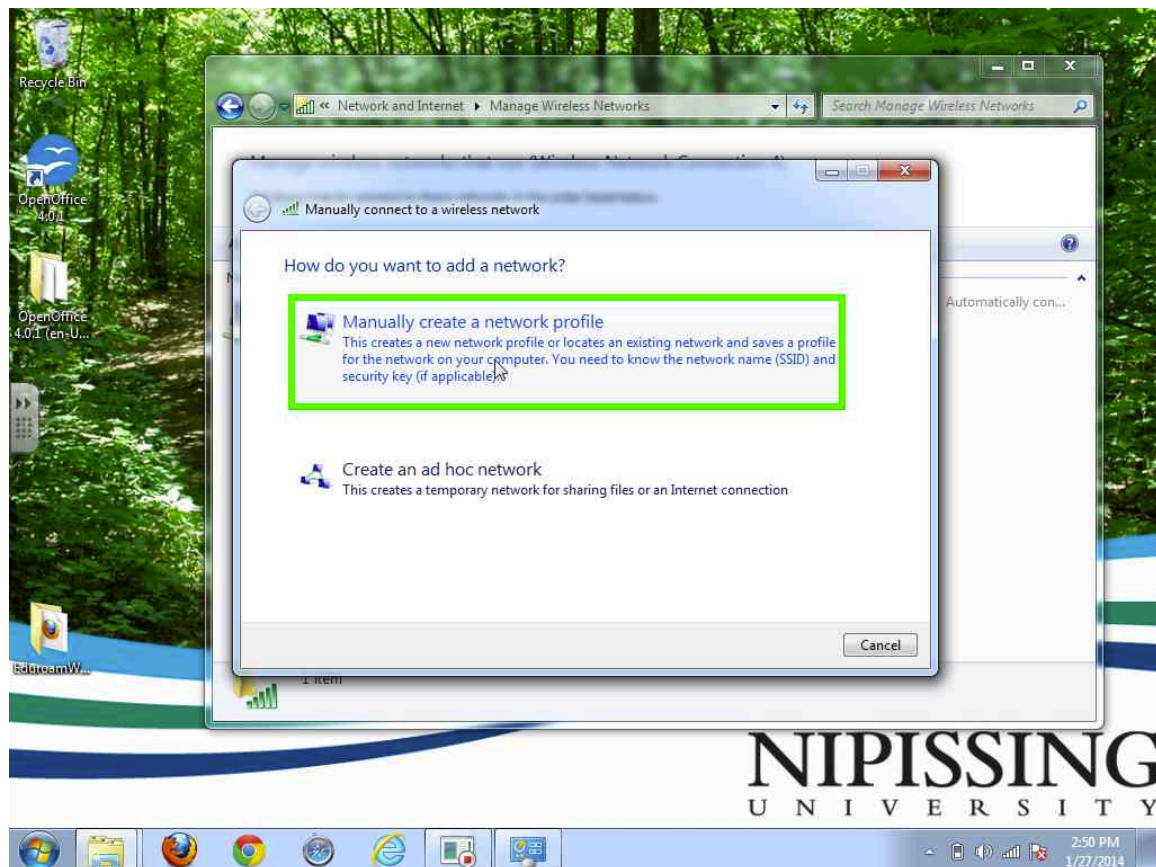
Step 2: Click on "Manage wireless networks" in "Network and Sharing Center"



Step 3: Click on "Add" in "Manage Wireless Networks"



Step 4: Click on "Manually create a network profile" in "Manually connect to a wireless network"



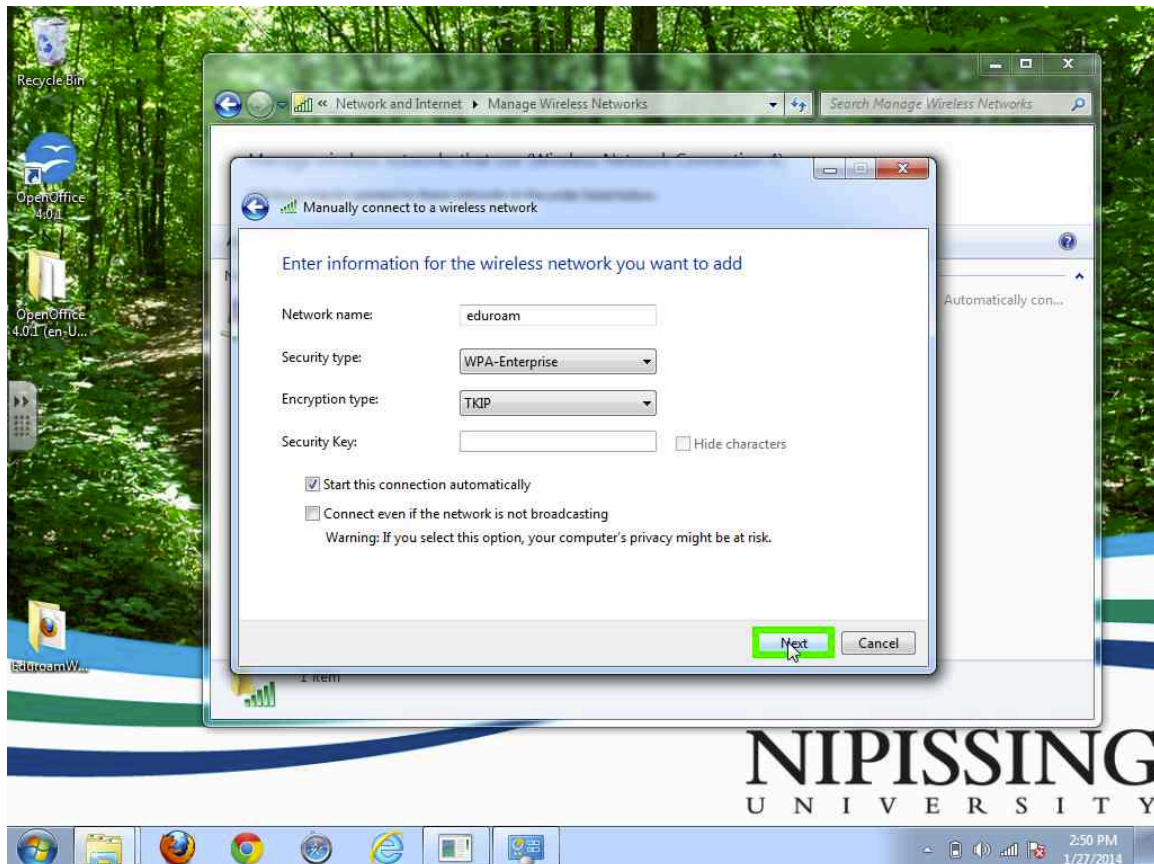
Step 5: Keyboard input in "Manually connect to a wireless network"

Network name = eduroam

Security type = WPA-Enterprise

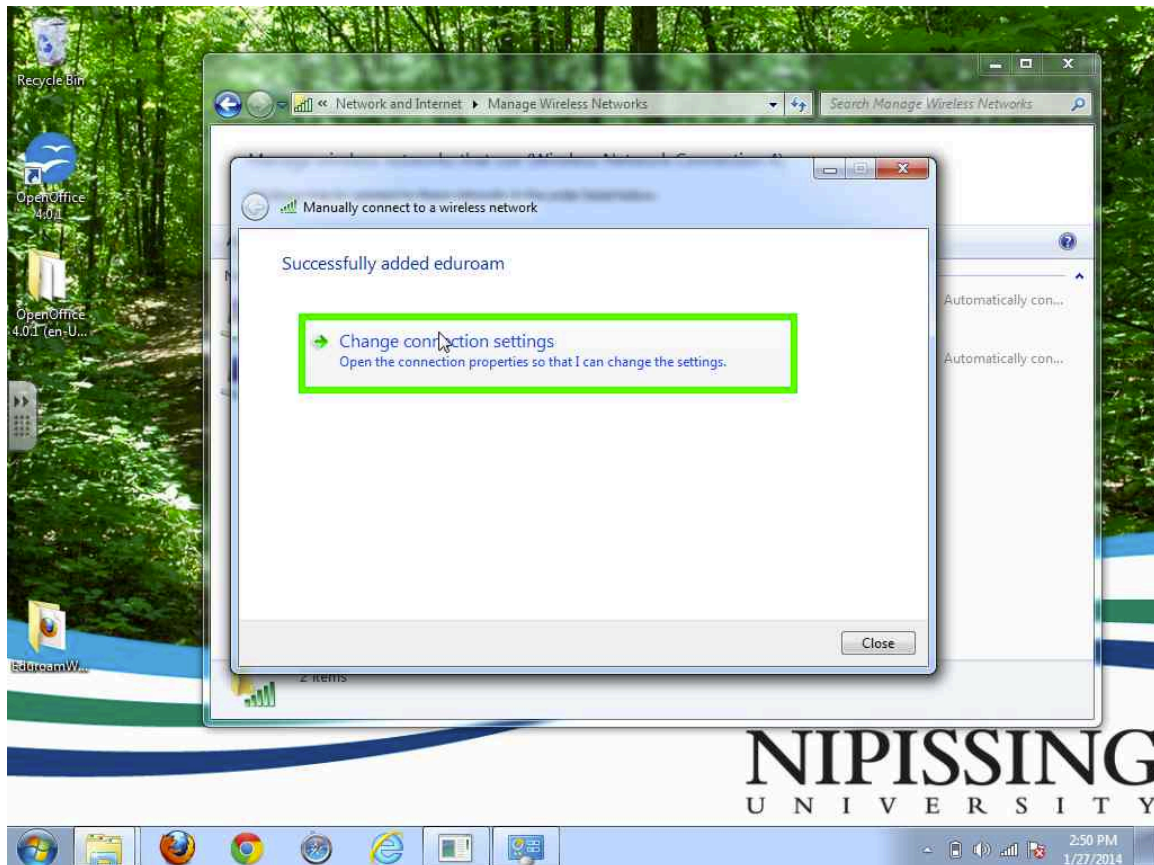
Encryption type = TKIP

“Start this connection automatically” should be checked.

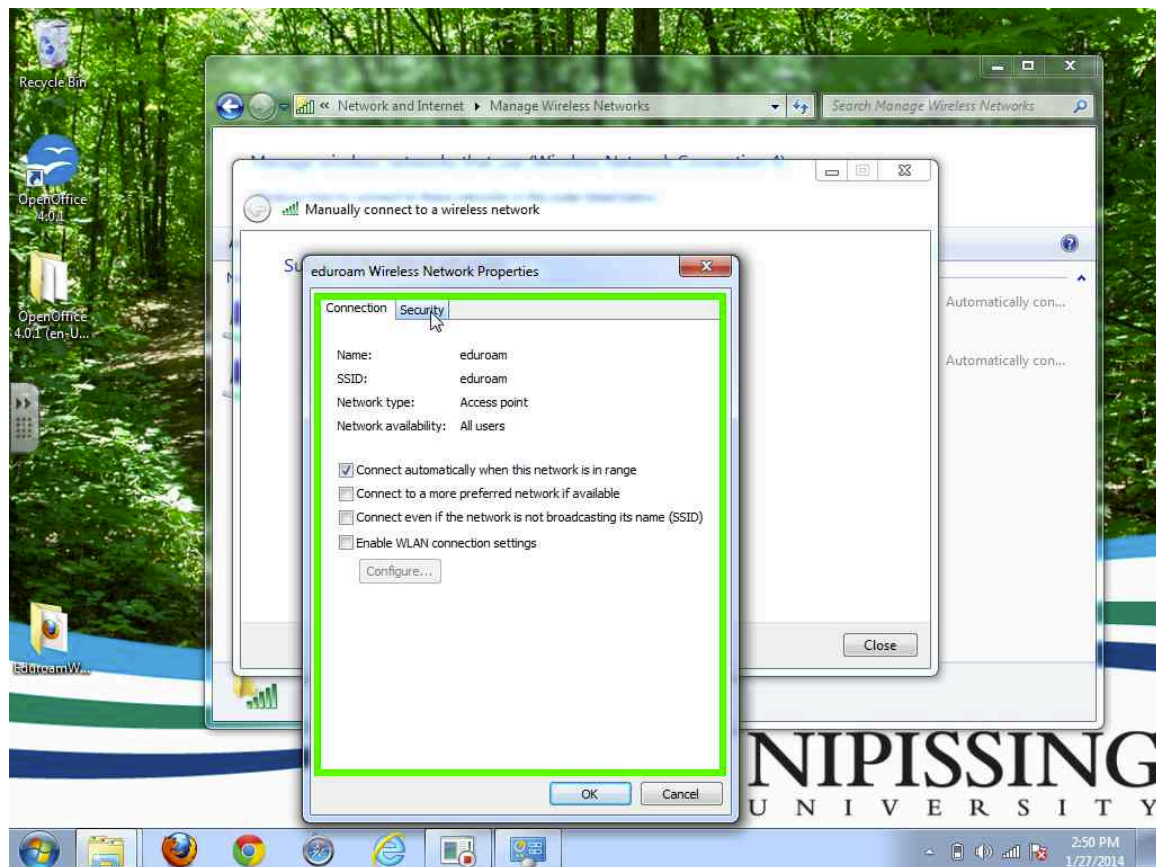


Click next.

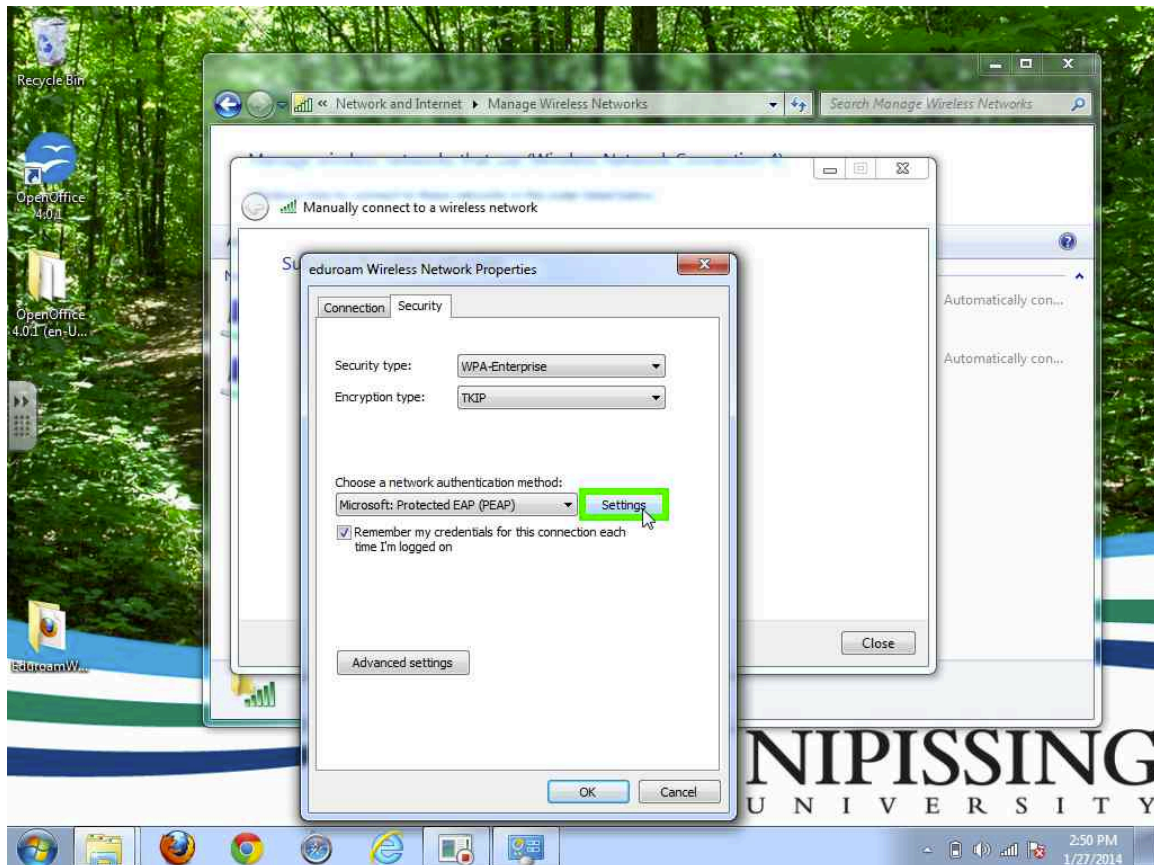
Step 6: Click on "Change connection settings" in "Manually connect to a wireless network"



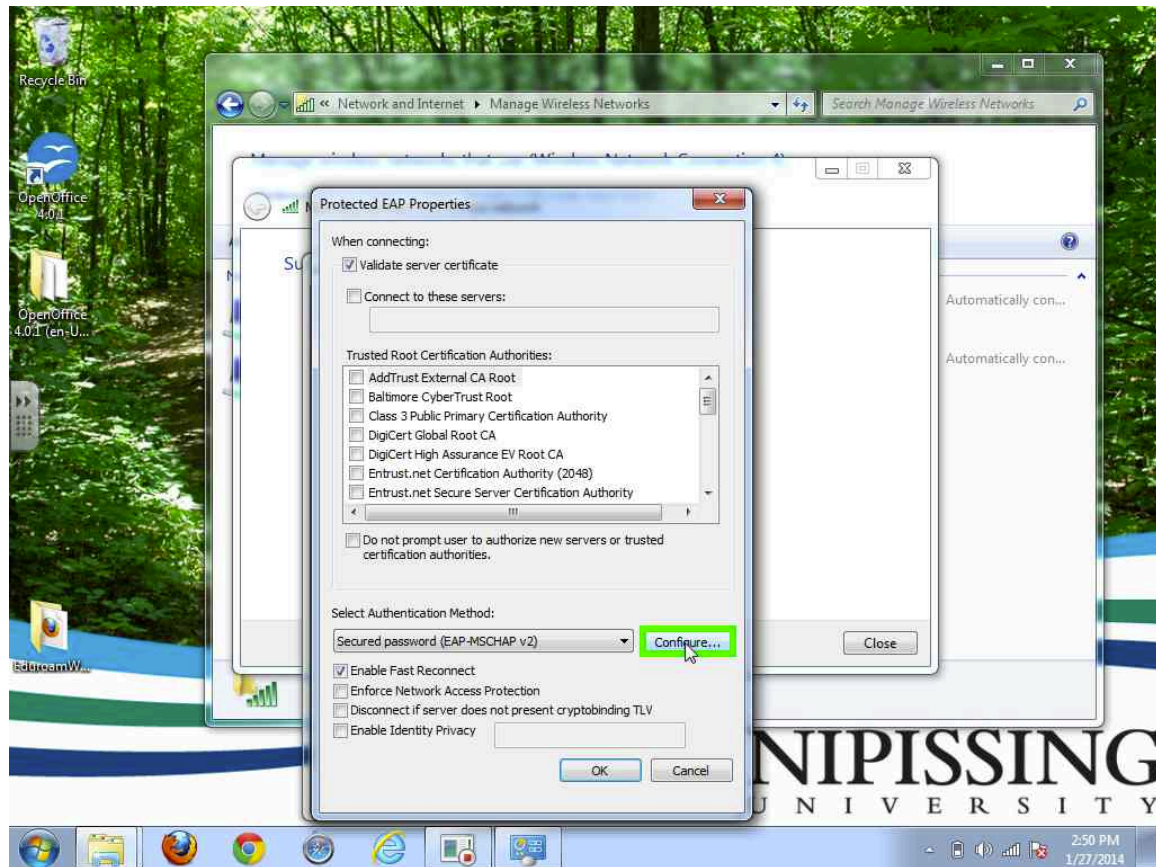
Step 7: Click on "Security (page tab)" in "eduroam Wireless Network Properties"



Step 8: Click on "Settings (push button)" in "eduroam Wireless Network Properties"

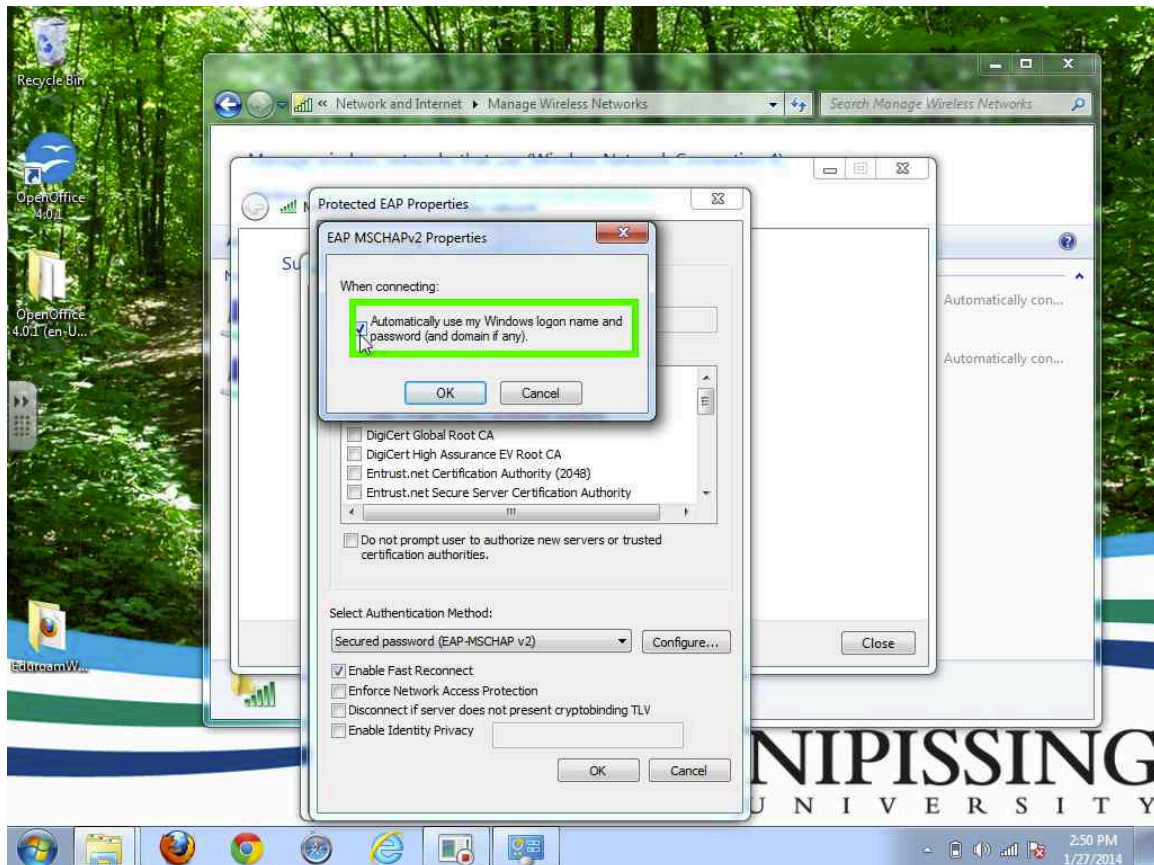


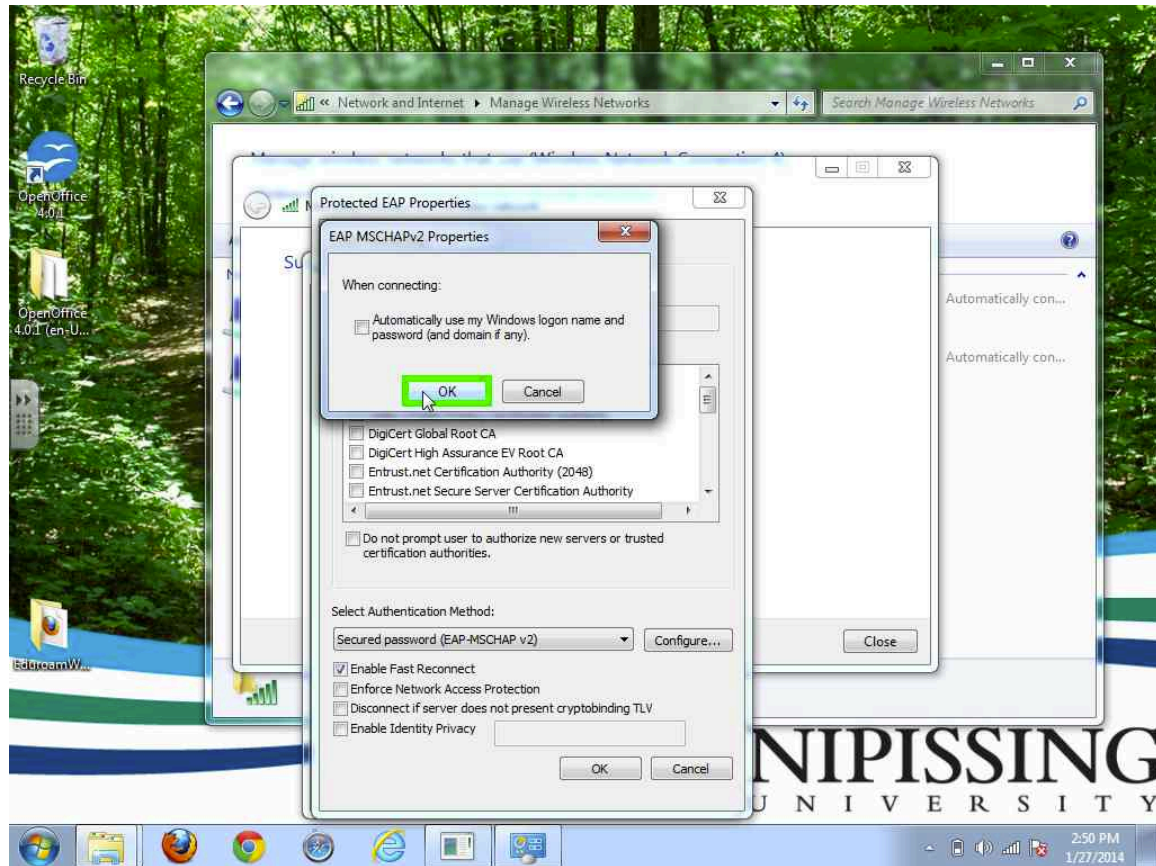
Step 9: Click on “Configure...” in "Protected EAP Properties"



Step 10: Click on "Automatically use my Windows logon name and password (and domain if any). " in "EAP MSCHAPv2 Properties"

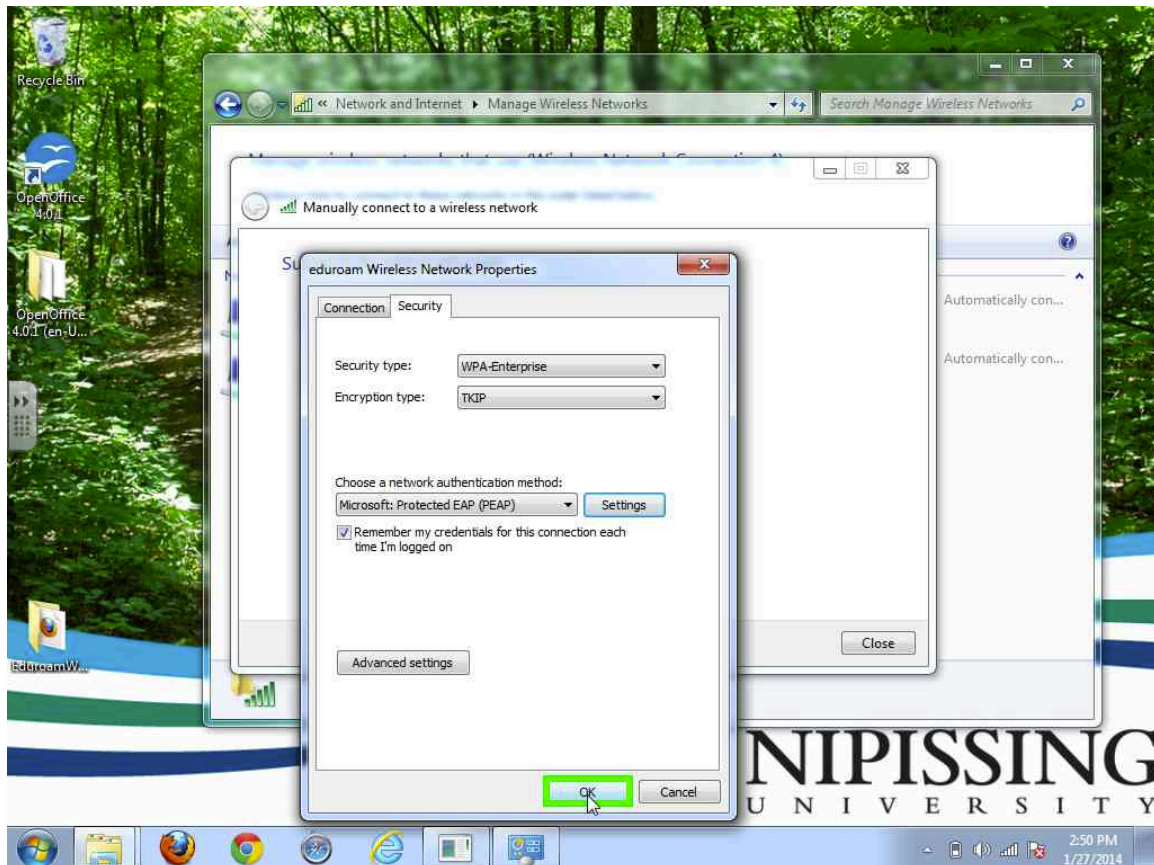
Clear the checkbox (it should be empty)



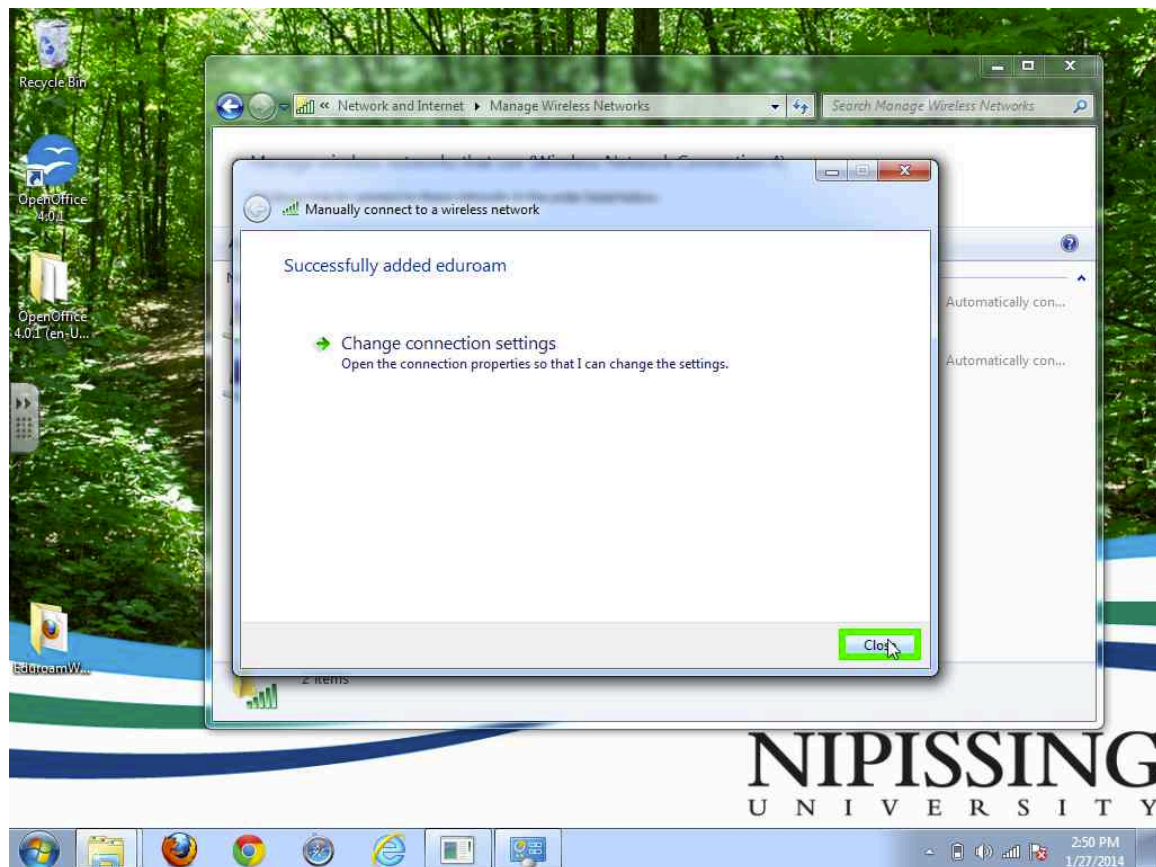


Then click “OK”.

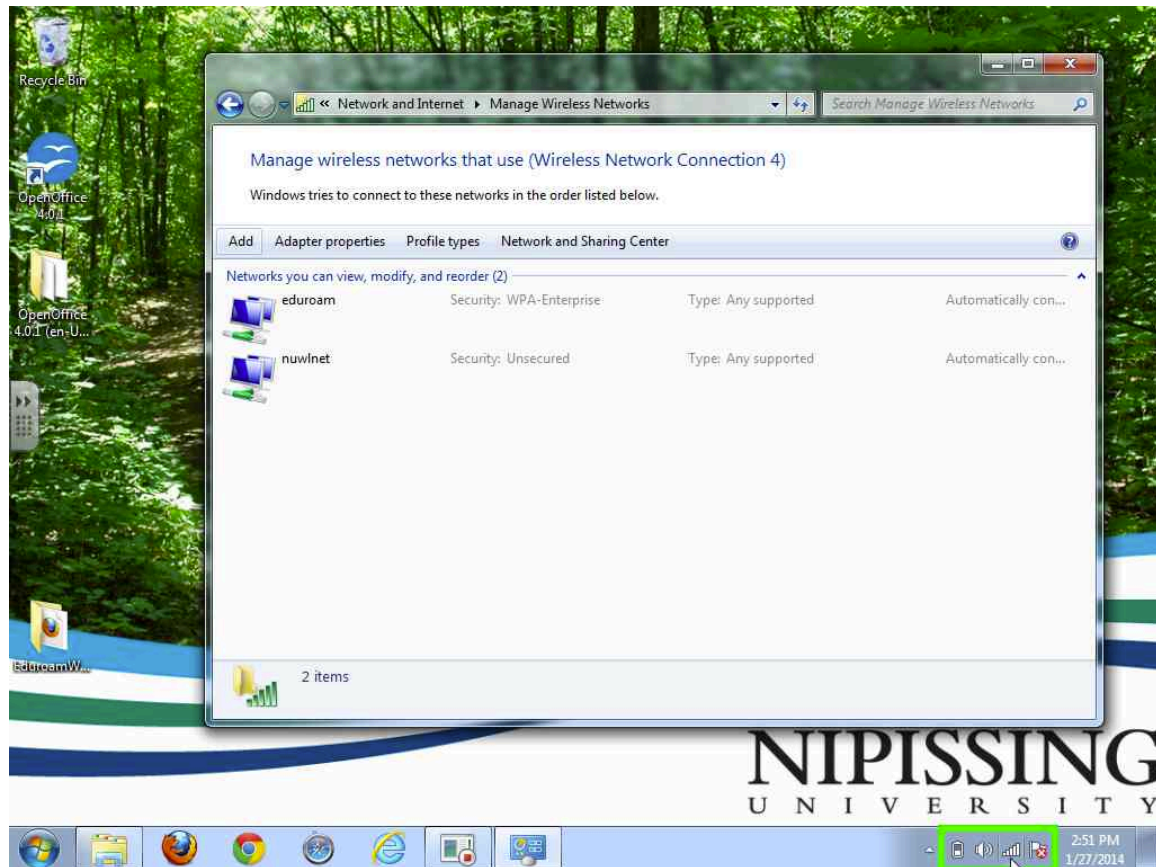
Step 11: click on "OK (push button)" in "eduroam Wireless Network Properties"



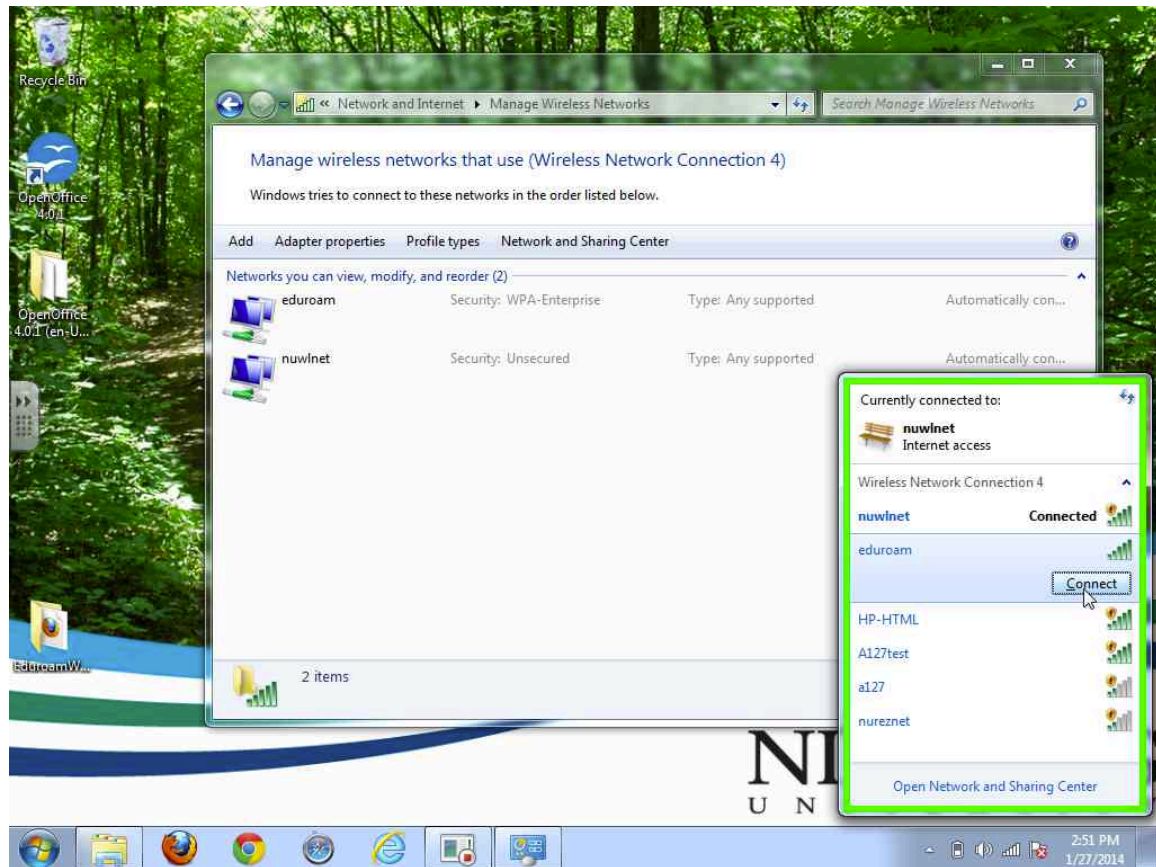
Step 12: Click on "Close" in "Manually connect to a wireless network"



Step 13: Click on "Internet access"



Step 14: Select eduroam and connect.

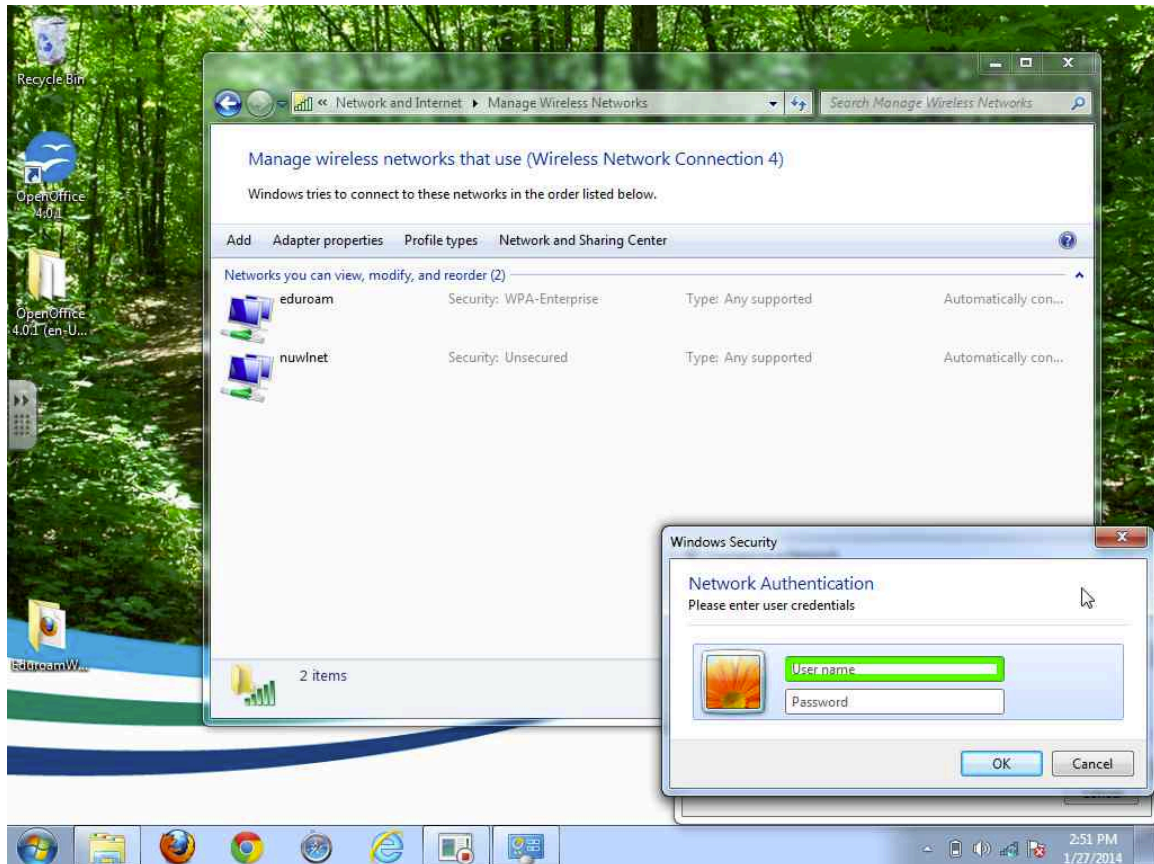


Step 15: Login using your Webadvisor username and password.

Make sure you use your Nipissing University username (your WebAdvisor ID) followed by @nipissingu.ca. This is not your email address. The "@nipissingu.ca" means that your home institution is Nipissing. When you are visiting other campuses, your userid will be validated by our Nipissing servers.

E.g. If your Webadvisor username is techserv:

Username = techserv@nipissingu.ca



Step 16: Click on "Connect" in "Windows Security Alert"

You may ignore this security alert. You also may view the details, if you wish.

