

NIPISSING

U N I V E R S I T Y

North Bay

www.nipissingu.ca

Anthropology



Program Description

Anthropology is a fascinating and interdisciplinary field that will have you investigating the vast scope of human experience. Your studies will range in focus from the origin of our species and the development of the first known human civilizations to language and the diversity of cultures that exist today. Your studies will provide you with fundamentals, principles and theories as you explore the human experience from cultural, historical, geographical and sociological perspectives. Your curiosity may unearth new knowledge as you find yourself immersed in hands-on fieldwork and conducting applied research.

We are part of the Sociology and Anthropology department, and together we emphasize applied research. That means that our students not only read books and write essays, but they also get plenty of opportunity for hands-on experience and research.

We also have the distinct advantage of being located in an area that has a rich history of First Nation activity and influence. In addition to traditional themes, our Anthropology program offers a unique focus on working with First Nations communities.

Our Teaching Approach

Along with a first-rate classroom experience, our program emphasis is on teaching research methods and qualitative fieldwork techniques—we want to prepare you to do research work in the real world. You will learn job-related skills, like how to conduct ethnographic fieldwork, interviews, and focus groups.

You will also have the opportunity to complete an undergraduate thesis, under the guidance of a faculty member—an enriching opportunity that is not typically available to undergraduates.

Program and Faculty

Bachelor of Arts

- Specialization
- Major
- Minor

Your first and second years will focus on introducing you to the foundations of the discipline. These two years will give you a broad overview of issues and concepts in anthropology, and help to develop your writing skills.

In upper years you will specialize and follow the areas you are most interested in such as medical anthropology, anthropology of development, and globalization and migration. Your upper year classes will incorporate small, seminar courses, and you will have an opportunity to complete the thesis course, which will allow you to explore a topic of your choosing.

You will also have opportunities to complete specialized fieldwork courses. For example, we've offered fieldwork courses in the past called Archaeology, and Qualitative Research Methods.

Our faculty is diverse and well-respected. Many have worked—and continue to partner—outside of the university environment, and many are actively conducting applied research. You will get unparalleled opportunities for real research and to learn fieldwork skills such as ethnography, site survey, cultural mapping, excavation, analysis and report writing. You will also have opportunities to participate in site digs in surrounding communities.





Bachelor of Education: The Schulich School of Education

If you want to earn a Bachelor of Education (BEd) degree, you can choose the Consecutive Program once you've completed your undergraduate degree.

The Schulich School of Education is one of the best education programs in Ontario. It will prepare you to teach in both traditional and non-traditional environments, and you will gain communication and collaborative skills that can be used in any career.

Our teacher candidates are immersed in an active professional learning environment with support and resources available through our Professional Learning Centre.

Each term a calendar of opportunities is made available, and you will be invited to participate in a series of real-world professional experiences that help you to hone skills, strategies and activities that integrate digital technology resources, enhance school community involvement, develop a personal résumé, portfolio and interview techniques, and much more.

All professional learning opportunities are designed to support and supplement course content by broadening teaching/learning skills and by building your confidence and readiness for the teaching profession.

Why Nipissing?

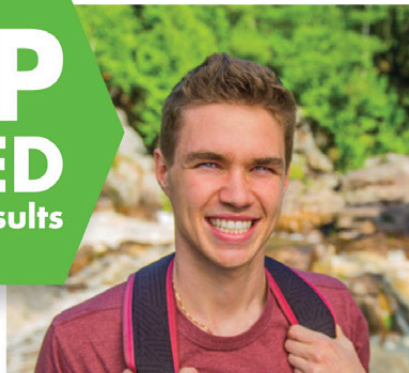
You will feel right at home the minute you step onto campus. Becoming a part of our community is just one of the many perks of attending Nipissing. You will also benefit from small class sizes where you will have a name and a voice. Should you need help, you will have access to our supportive professors, even outside of classroom hours.

Nipissing is focused on student success. You will have access to a full range of student services that will help you succeed academically, financially, and personally.

In addition, we have some of the best residences in Canada, with a guaranteed private room for all first-year students coming directly from high school.

We encourage you to come and see for yourself why you belong at Nipissing.

**TOP
RATED**
Survey Results



I'm satisfied with my decision to attend this university (Strongly Agree/Agree)

NIPISSING	98%
Laurier	95%
Carleton	94%
Waterloo	94%
Brock	92%
Lakehead	91%
Ryerson	91%
York	88%

CUSC survey as published in Maclean's February 2014 (Ontario Universities)



Where Can I Go From Here?

An Anthropology degree opens up many career options for graduates with critical thinking and analytical skills that can be applied to many different professions.

Having developed a strong background in research, some of our students pursue graduate school in anthropology, sociology, museum studies, or philosophy, or continue on to a professional program like teaching or law. Many students are well suited for research positions with government or not-for-profit organizations, or a career in international development, tourism, heritage and conservation, museum work, and much more.

Find Out Why You Belong at Nipissing

Sign up for Open House, a tour, or more information:

ibelongatnipissingu.ca

For more information on the Anthropology program please visit:

www.nipissingu.ca/anthropology



ONE STUDENT AT A TIME

Student Recruitment Office, 100 College Drive, Box 5002, North Bay, ON P1B 8L7
tel: (705) 474-3450 ext. 4200 • toll free (within Ontario): (800) 655-5154 • tty: (877) 688-5507
nuinfo@nipissingu.ca • www.nipissingu.ca • www.facebook.com/NipissingU • [@NipissingU](https://twitter.com/NipissingU) @NURecruitment

If you would like to request this publication in an alternative format please contact the Student Recruitment Office at (705) 474-3450 ext. 4200